

PART ELEVATION
 1-110'-0" STEEL SPAN AND 16-30'-0" R.C. DECK GIRDER SPANS

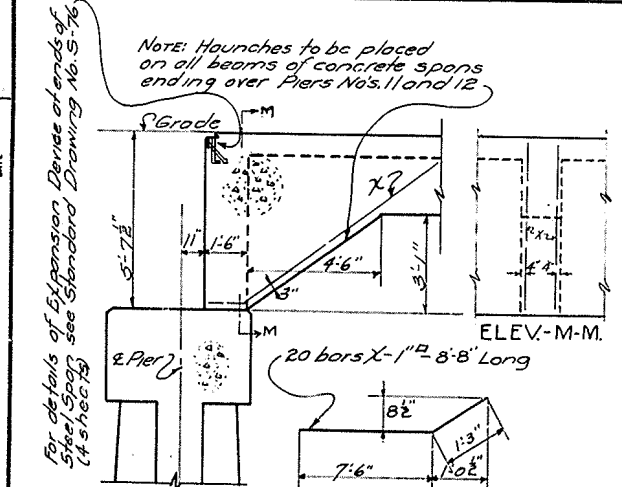
TOTAL ESTIMATE OF QUANTITIES

SUBSTRUCTURE AND APPROACH SPANS

Concrete, Class "A"	1662.6	Cu. Yds.
Concrete, Class "D"	60.8	Cu. Yds.
Reinforcement	278,020	Lbs.
Structure Excavation-Unclassified	3000	Cu. Yds.
Excavation (Channel Change)	See Road Plans	

SUPERSTRUCTURE

Structural Steel	148,206	Lbs.
Concrete, Class "A"	71.9	Cu. Yds.
Steel Reinforcement	14,560	Lbs.



ESTIMATE OF ADDITIONAL QUANTITIES
 FOR SPANS NOS 11 AND 13

Concrete, Class "A"	11.3	Cu. Yds.
Reinforcement	590	Lbs.

ADDITIONAL DETAILS FOR DECK GIRDER SPANS NOS. 11 & 13

- REFERENCES:**
- For details of 18'-0" R.C. Abutment No. 1 see Standard Drawing No. A-234.
 - For details of 20'-0" R.C. Abutment No. 2 see Standard Drawing No. A-237.
 - For details of 16'-0" R.C. Pier No. 1 see Standard Drawing No. A-107.
 - For details of 18'-0" R.C. Piers No's 2, 3, 4, 5, 6, 7, 8, 9, 10, 11, 12, 13 and 16 see Standard Drawing No. A-107.
 - For details of 20'-0" R.C. Piers No's 10 and 13 see Standard Drawing No. A-107.
 - For details of 23'-0" R.C. Piers No's 11 and 12 see Sheet No. 2 of 2 of this drawing.
 - For details of 30'-0" R.C. Deck Girder Spans No's 1, 2, 3, 4, 5, 6, 7, 8, 9, 10, 11, 12, 13, 14, 15, 16, and 17 see Standard Drawing No. G-228.
 - For details of 30'-0" R.C. Deck Girder Spans No's 11 and 13 see Standard Drawing No. G-228, and Details on this sheet.
 - For details of Handrails for Deck Girder Spans see Standard Drawing No. H-12.
 - For details of Drains for Deck Girder Spans see Standard Drawing No. G-200.
 - For details of 110'-0" R.C. Steel Span No. 12 see Standard Drawing No. S-76 (4 sheets).
 - For Standard Expansion Details see Standard Drawing No. S-86.
 - For Typical Handrail details for Steel Span see Standard Drawing No. S-47.

GENERAL NOTE

Specifications: State Highway Department, Kentucky, (1932 Standard with subsequent adopted amendments). Class "A" concrete to be used thruout except in Handrail and Posts. Class "D" concrete to be used in Handrail and Posts.

Steel Reinforcement: To be deformed bars. Dimensions shown from face of concrete are clear distances. Dimensions shown for bar spacing are the distances center to center of bars. All reinforcement shall be securely held in correct position by means of precast mortar or concrete blocks and wired at all intersections. Precast mortar or concrete blocks supporting reinforcement shall be spaced not farther apart than 50 diameters of the supported bar. Shop Coat on all Steel Work to be Red Lead or Basic Sulphate Blue Lead.

Paint: Notes or requirements shown on Standard Drawings called for shall be disregarded only in those portions which do not conform to the 1932 Specifications.

Expansion Joint Filler: All Filler used in preformed expansion joints and Cast Iron Drains in Deck Girder Spans to be included in price bid for class "A" concrete.

Expansion Angles: Expansion Angles on Deck Girder Spans to be furnished by Contractor for Superstructure and placed by contractor for substructure. Contractor shall notify the Bridge Engineer at least 60 days in advance of the use of these Angles.

Foundations: Piers No. 11 and 12 designed for fine Sand Foundation, maximum pressure-3500 lbs. per sq. ft. All other Footings designed for soapstone or gravel foundation, maximum pressure-4000 lbs. per sq. ft.

Expansion Angles on Deck Girder were furnished and placed by Contractor for substructure, and are not included in weight of structural steel on superstructure.

Sheet 1 of 2
 Bridge over East Fork of Clark's River

S-47
S-86
S-75 (4 sheets)
A-234
A-237
A-107
G-200
G-228
H-12

COMMONWEALTH OF KENTUCKY
 STATE HIGHWAY DEPARTMENT
 FRANKFORT
 COUNTY OF

MARSHALL
MAYFIELD-EGGNER'S FERRY

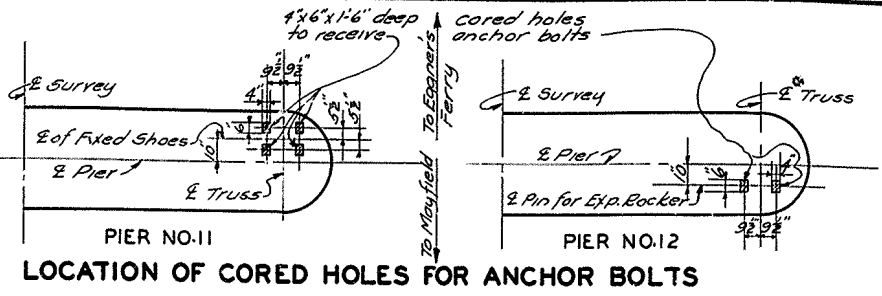
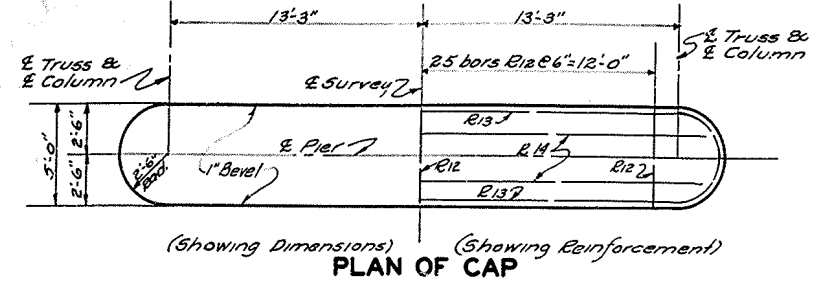
STATION 638 +00 ROAD PROJECT NO.

MP 79-173-7 5818

MRN 265 ak

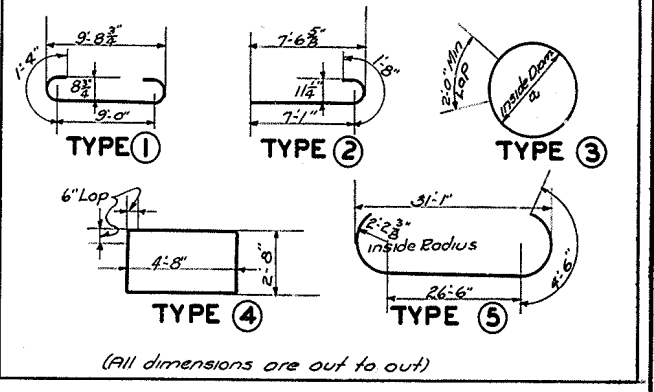
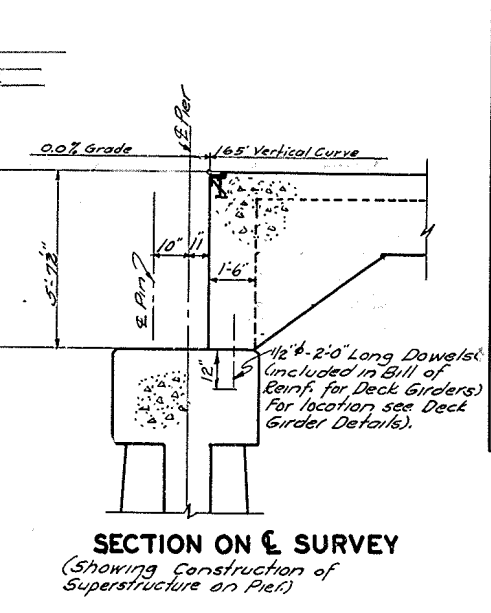
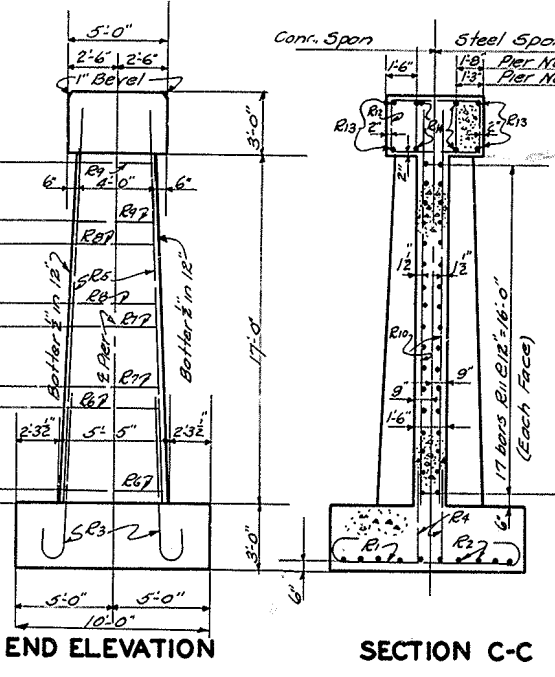
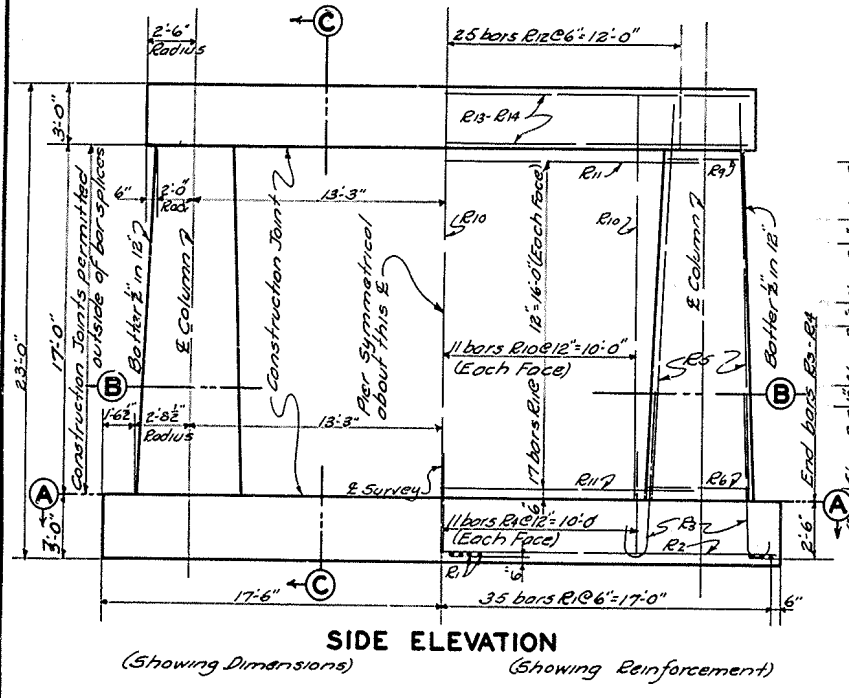
BRIDGE

FED. ROAD DIST.	STATE	FED. AID PROJ. NO.	FISCAL YEAR	SHEET NO.	TOTAL SHEETS
T	KY.				



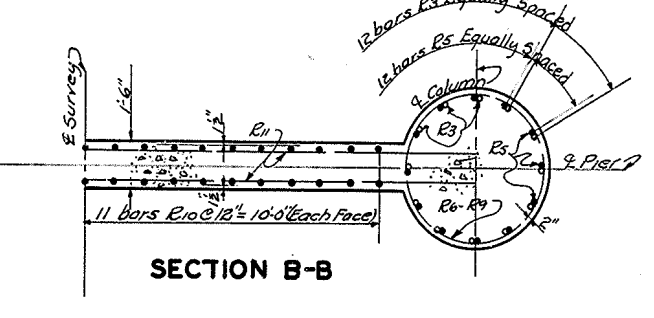
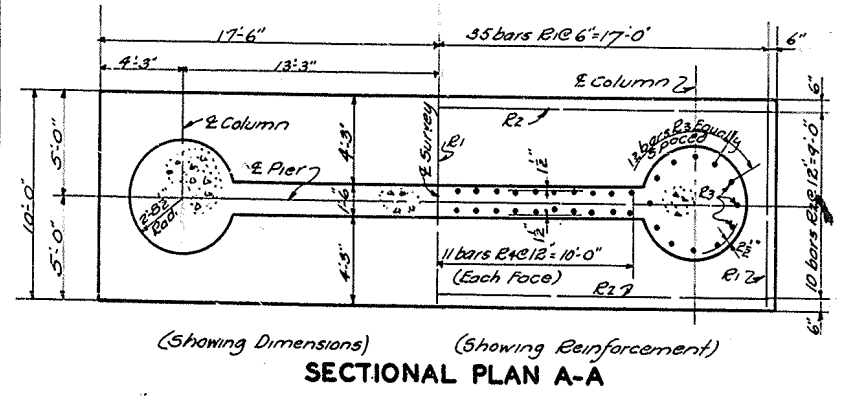
BILL & TYPES OF REINFORCEMENT (FOR ONE PIER)

Mark	Type	No.	Size	Length	Location	Est.
R1	①	69	3/8" φ	11' 8"	Footings	—
R2	Str	10	"	34	"	—
R3	②	21	1 1/2" φ	8	Dowels - Footings into Columns	—
R4	Str	42	5/8" φ	5	" " " " Web Wall	—
R5	"	24	1 1/2" φ	19	Columns into Cap	—
R6	③	10	1/2" φ	17	Columns	4 11 1/2
R7	"	8	"	16	"	4 6 1/2
R8	"	8	"	15	"	4 2 1/2
R9	"	8	"	14	"	3 10 1/2
R10	Str	42	5/8" φ	19	Web Wall into Cap	—
R11	"	34	"	26	Web Wall	—
R12	④	49	1/2" φ	15	Cap	—
R13	⑤	4	1 1/2" φ	3.5	"	—
R14	Str	4	"	23	"	—



ESTIMATE OF QUANTITIES (FOR ONE PIER)

Concrete, Class 'A'	98.5 Cu. Yds.
Reinforcement	9390. Lbs.



DETAILS OF PIERS NO'S. 11 & 12

Prepared by: J.L.G.N. DATE: 10-17-32
 CHECKED BY: J.C.H. DATE: 10-17-32
 REVISIONS: NONE

Sheet 2 of 2
Bridge over East Fork of Clark's River.

COMMONWEALTH OF KENTUCKY
 STATE HIGHWAY DEPARTMENT
 FRANKFORT
 COUNTY OF

MARSHALL
MAYFIELD-EGGNER'S FERRY

STATION 638+00 ROAD PROJECT NO.
 MP 79-173-7 5818

BRIDGE